



Sunbeam Academy® Group
Schools & Hostels (Affiliated to CBSE, New Delhi)



SCHOOL FEE CHART

+ - .





Fee Structure 2023-2024



Durgakund

Class	Prospectus and Form Fees	Admission Fees	Monthly School Composite Fees	Examination Fees (August, October, December, February)
P.G. – U.K.G	₹ 800/-	₹ 10,000/-	₹ 3,400/-	₹ 550/-
I – II	₹ 800/-	₹ 12,000/-	₹ 4,000/-	₹ 550/-
III – V	₹ 800/-	₹ 12,000/-	₹ 4,400/-	₹ 550/-
VI – VIII	₹ 800/-	₹ 15,000/-	₹ 5,100/-	₹ 700/-

Important Note

*LAST DATE TO SUBMIT THE FEES IS **15th OF EVERY MONTH**, POST THAT - Late fee fine -

*₹300/- per month and after three months re-admission fees of ₹5000/- will be charged.

*Prospectus and Form Fees is to be paid while purchasing the form. Admission fees is payable by the new students at the time of admission only.

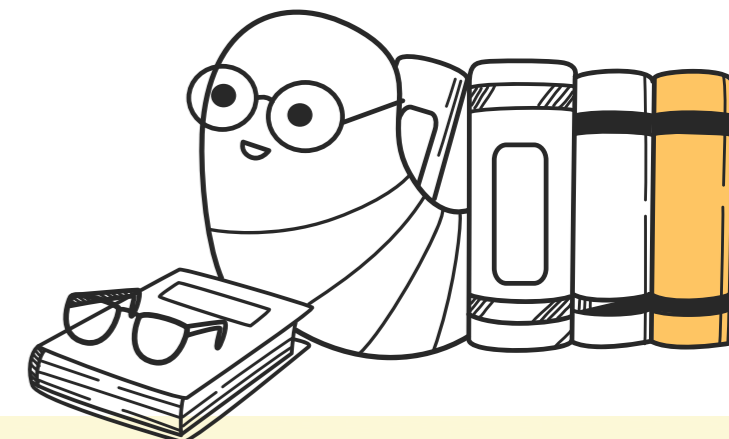
*Fees once paid is non – refundable.

*STEM LAB - ₹1600/- (Class I to VIII, to be paid in the month of April), Digital Resource and LMS charges of ₹100/- per month, School Cinema fees - ₹600/- (Class LKG to VIII, to be paid in the month of September).

*For Samneghat and Knowledge Park branch only - Hobby Classes - ₹1600/- (Class I to VIII, to be paid in the month of July) ₹2400/- (Class IX, To be paid in the month of July).

*Transport fees is optional and will depend on the distance covered.

*For any optional, curricular, extra-curricular activities, exams, workshops and Olympiads, excursion, day boarding etc. or any other similar optional amenities offered by the school at any time of the year, a separate fee will be charged after taking the due consent from the parents. .



Sarainandan

Class	Prospectus and Form Fees	Admission Fees	Monthly School Composite Fees	Examination Fees (August, October, December, February)
P.G. – U.K.G	₹ 800/-	₹ 8,000/-	₹ 3,200/-	₹ 550/-
I – II	₹ 800/-	₹ 10,000/-	₹ 3,600/-	₹ 550/-
III – V	₹ 800/-	₹ 10,000/-	₹ 3,900/-	₹ 550/-
VI – VIII	₹ 800/-	₹ 12,000/-	₹ 4,700/-	₹ 700/-

Samneghat

Class	Prospectus and Form Fees	Admission Fees	Monthly School Composite Fees	Examination Fees (August, October, December, February)
P.G. – U.K.G	₹ 800/-	₹ 10,000/-	₹ 4,600/-	₹ 550/-
I – II	₹ 800/-	₹ 12,000/-	₹ 4,600/-	₹ 550/-
III – V	₹ 800/-	₹ 12,000/-	₹ 5,100/-	₹ 550/-
VI – VIII	₹ 800/-	₹ 15,000/-	₹ 5,600/-	₹ 700/-
IX – X	₹ 800/-	₹ 18,000/-	₹ 6,100/-	₹ 700/-
XI – XII	₹ 800/-	₹ 20,000/-	₹ 6,600/-	₹ 700/-

Knowledge Park

Class	Prospectus and Form Fees	Admission Fees	Monthly School Composite Fees	Examination Fees (August, October, December, February)
P.G. – U.K.G	₹ 800/-	₹ 20,000/-	₹ 3,000/-	₹ 550/-
I – II	₹ 800/-	₹ 20,000/-	₹ 3,000/-	₹ 550/-
III – V	₹ 800/-	₹ 20,000/-	₹ 3,400/-	₹ 550/-
VI – VIII	₹ 800/-	₹ 20,000/-	₹ 3,800/-	₹ 700/-
IX – XII	₹ 800/-	₹ 20,000/-	₹ 4,200/-	₹ 700/-